

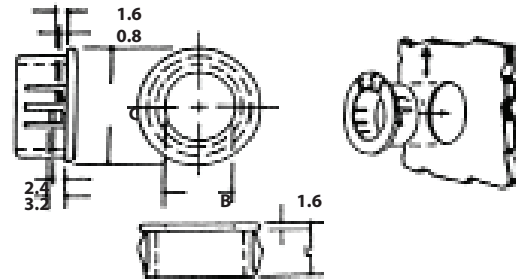
BANDEX CABLE GLAND AND BUSHING

เคเบิลกลอน และบุชซิ่ง

SNAP BUSHING

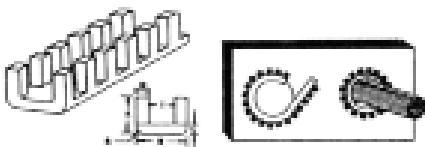
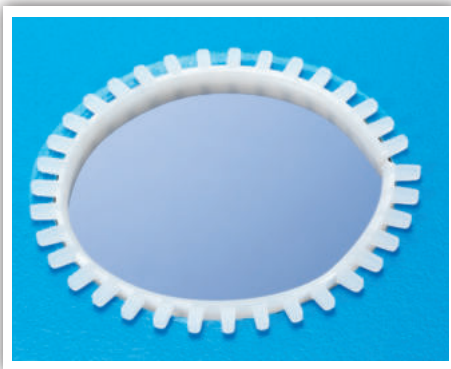
- Material: Nylon(Black)
- SNAP BUSHING smooth and insulate your raw-edged holes in metal chassis
- Locking into hole firmly with fingertip pressure.
- Protect electrical cables, ropes, utility lines through metal holes.
- Available in application for chassis thickness from 0.8 mm to 3.2 mm

Item no.	Mounting hole mm				Pack Qty	Price
	A	B	C	L		
SB-08	7.9	5.2	9.4	8.0	100 pcs	1.30.-
SB-10	9.5	6.3	12.0	10.3		1.54.-
SB-13	13.0	8.2	14.5	10.3		1.68.-
SB-16	15.9	12.2	18.6	10.3		2.10.-
SB-19	18.9	14.3	21.5	10.3		2.30.-
SB-22	22.0	17.3	23.8	11.5		2.52.-
SB-26	25.1	19.1	28.0	11.5		2.80.-
SB-30	29.7	24.1	32.5	11.5		3.50.-
SB-38	38.1	29.0	41.2	11.4		5.50.-



MOVABLE BUSHING

กระดุกงู กั้นบาด



STANDARD

- P.E. Extruded movable bushing. 10M per roll packed in a plastic bag.
- Cut to fill any hole size for protecting cords, wires, cables against damage from sharp panel edges.
- Available upon request
- Also available in moulded PE bushing. 25 cm per piece and 40pcs packed per bag.

Part no.	T (mm)	Max. Chassis	Packing	Material	Price
		Thickness mm			
MB-010	1	1	10 M.	P.E.	250.-
MB-016	1.6	1.0 - 1.6			250.-
MB-020	2	1.6 - 2.0			295.-
MB-024	2.4	2.0 - 2.4			295.-
MB-032	3.2	2.4 - 3.2			332.-
MB-045	4.5	3.2 - 4.5			392.-